



Conservatori Professional de Música de Cervera

Prova d'accés d'instrument (Especialitat: Guitarra)

L'exercici consistirà en:

1. Interpretar a vista un fragment musical inèdit i adient al nivell
2. Haurà d'interpretar 2 estudis –de diferents autors- i 3 obres -una de lliure elecció- d'autors i estils diferents, dels diferents apartats del programa que estableix el centre
3. Una obra de Música de cambra de lliure elecció adient al nivell.

Cal presentar les partitures de les obres i estudis escollits.

La lliçó a vista serà una frase de vuit compassos d'una dificultat adient al nivell del curs



ACCÉS A 5e. G.P.

Estudis:

- M. Carcassi op. 60: 19, 20, 23, 24, 25
- F. Sor op 6: 6, 10 (Ed. Tecla)
- F. Sor op. 31: 15 (Ed. Tecla)
- F. sor op. 35: 7 (Ed. Tecla)
- D. Aguado -3ª part-: 5, 6
- E. Pujol "Escuela Razonada vol. 3": 14
- L. Brower: 17
- N. Coste op. 38: 9, 14
- Dogson-Quine: 5
- H. Villa-Lobos: 1, 8

Obres:

Apartat a)

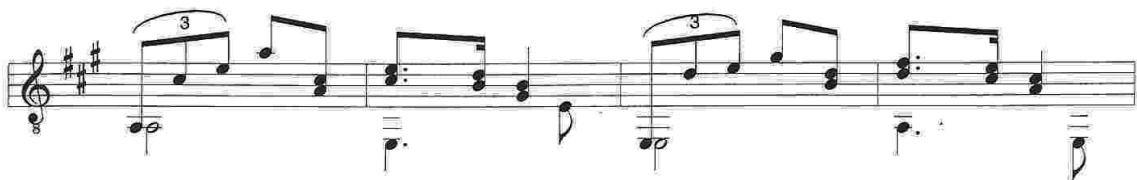
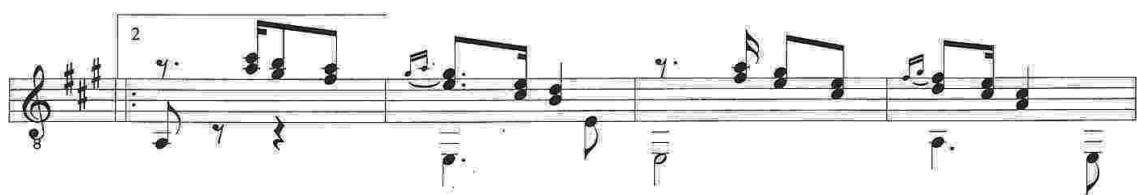
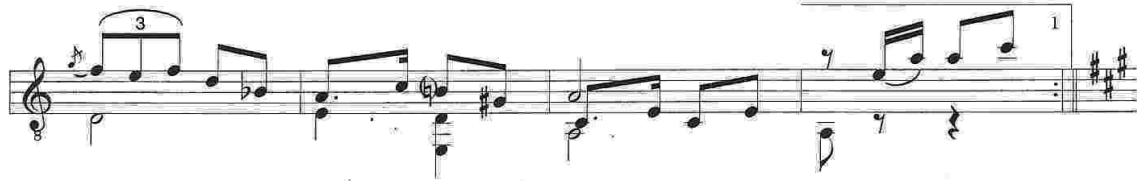
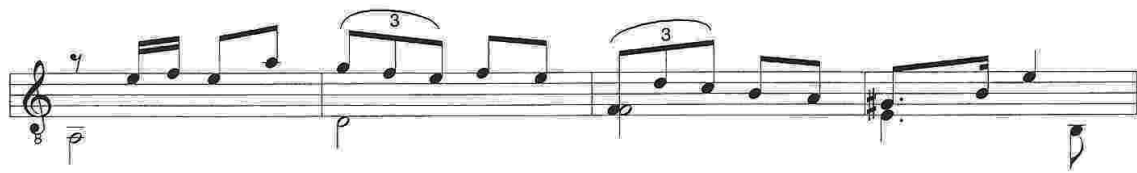
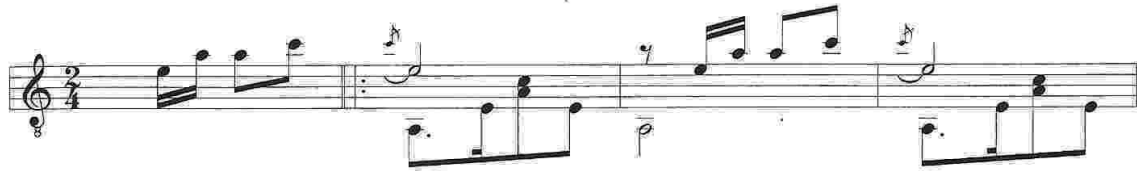
Fantasia del 4º tono.....	L. Milan
Variaciones sobre Guardame las vacas.....	L. de Narváez
Preludi BWV 999.....	J.S.Bach
Sarabande I Doble -sonata en Si m-.....	J.S.Bach
Fantasias.....	J. Dowland
1ª Grand Overture.....	F. Carulli
Los Adioses.....	F. Sor

Apartat b)

Las dos hermanitas.....	F. Tarrega
Preludi 5	H. Villa-lobos
El Marabino.....	A. Lauro
Dos temas Populares Cubanos.....	L. Brower
Scherzino mexicano.....	M.M. Ponce
Tema Negro.....	J. Cardoso
Fandanguillo.....	F. Moreno Torroba
El Abejorro.....	E. Pujol
La Filadora, Plany.....	M. Llobet
Habanera.....	R. Sainz de la Maza

Exemples de lectura a vista:

a)



b)

The first staff of music is in treble clef with a key signature of three sharps (F#, C#, G#) and a common time signature. It contains a sequence of notes and rests: a whole note chord (F#, C#, G#), followed by quarter notes G#4, A4, B4, and C5. The next measure contains a quarter note G#4, a quarter note A4, and a quarter note B4. The final measure contains a quarter note G#4, a quarter note A4, and a quarter note B4.

The second staff of music is in treble clef with a key signature of three sharps (F#, C#, G#) and a common time signature. It contains a sequence of notes and rests: a whole note chord (F#, C#, G#), followed by quarter notes G#4, A4, B4, and C5. The next measure contains a quarter note G#4, a quarter note A4, and a quarter note B4. The final measure contains a quarter note G#4, a quarter note A4, and a quarter note B4.

The third staff of music is in treble clef with a key signature of three sharps (F#, C#, G#) and a common time signature. It contains a sequence of notes and rests: a whole note chord (F#, C#, G#), followed by quarter notes G#4, A4, B4, and C5. The next measure contains a quarter note G#4, a quarter note A4, and a quarter note B4. The final measure contains a quarter note G#4, a quarter note A4, and a quarter note B4.